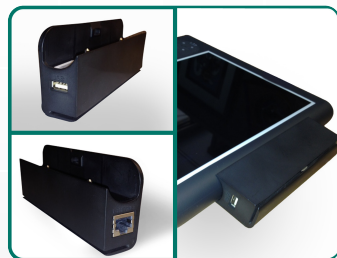




# EASYCONNECT + MSR<sup>e</sup>

## Snap-on I/O Module with Magstripe Reader

Simplify the way you process transactions and improve your customer's experience by accepting payments on your Mobile Point-of-Sale solution. Man & Machine, Inc. has partnered with Motion Computing® to provide an integrated Mobile Point-of-Sale solution utilizing a Windows®-based Tablet PC and a detachable encryption-capable MagStripe Reader. By combining the purpose-built Motion Computing x5v Tablet PC and the NEW Man & Machine, Inc. EasyConnect + MSR<sup>e</sup> snap-on module, you gain the mobility and productivity of an ergonomic POS device with the flexibility and function of a full-blown PC. Your entire POS application is available to users on-the-go while allowing for secure credit card transactions via P2PE, without bulky hardware to carry around.



▲ EasyConnect + MSR<sup>e</sup> snaps on easily and adds an additional USB/Ethernet port to your Motion Computing x5v

### FEATURES

- Adds secure MSR to Windows Tablet PC
- Encrypting MSR supports P2PE (Point to Point Encryption)
- Provides additional USB port
- Reads up to 3 tracks of card data Bi-Directional read
- Supports HID or Keyboard Emulation interfaces
- Lightweight
- No external power supply required

### SPECIFICATIONS

- Reads encoded data that meets ANSI/ISO/AAMVA standards and others such as ISO track 1 format on tracks 1, 2 or 3
- Triple DES encryption capable
- Can use standard Windows HID driver for communications. No third party device driver is required.
- Composition: Cycobly CX7240 UL94V0 rated
- I/O: 1USB or 1Ethernet\*
- Compliance: CE, FCC, UL 60950-1/CSA C22.2N0.60950-1
- Compatibility: Compatible with Motion x5v Tablet PCs
- Windows HID or Keyboard Emulation interface
- Storage Temperature: -40° C to +70° C (-40° F to 158° F)
- Operating Temperature: -40° C to +70° C (-40° F to 158° F)
- Dimensions: 145mm X 58mm X 27mm
- Weight: 105 g
- Color: Black
- Warranty: One year

\*Available port configuration may vary